



KRISHIIV LANDMARKS PRIVATE LIMITED



INDEX

- Board of Directors
- Vision, Mission
- The KRISHIIV Story
- Engineering DNA
- The KRISHIIV Values
- Our Strengths
- KRISHIIV Legacy
- SBKPIPL
- S B KALE Projects



THE VISIONARY WHO REIMAGINED THE WORLD

Mr. Nachiket Landge Founder Director and Business Development Head of Krishiiv Landmarks Pvt. Ltd, He embodies visionary leadership and entrepreneurial spirit. His strategic foresight has been instrumental in laying the company's foundation and propelling its growth in the real estate and construction sectors.



MR. NACHIKET LANDGE
DIRECTOR & BUSINESS HEAD

**“ I SEE A CLEAR GREENER FUTURE
ON THE HORIZON WHERE EVERY
ONE CAN LIVE HAPPIER ,LIVE
BETTER”**

A MAN WITH A SOLUTION TO EVERYTHING HE IS TRUE SENSE THE PILLAR OF STRENGTH OF KRISHIIV GROUP FAMILY

Mr. Shriram Kale, the esteemed Founder Director and CEO of Krishiiv Landmarks Pvt. Ltd, holds a Bachelor's degree in Civil Engineering from the University of Pune. With his extensive expertise and strategic insight, he oversees the management and coordination of all ongoing projects, ensuring their seamless execution and adherence to the highest standards. His dedication and leadership continue to elevate the company's reputation within the real estate and construction sectors.



MR. SHRIRAM KALE
DIRECTOR & C.E.O

**“TODAY WE LIVE OUR BEST LIFE
AND TOMORRO,WE WILL BETTER”**

OUR VISION

To become a leading integrated real estate development company recognized for its strong in-house execution expertise, meticulous attention to detail, and unwavering commitment to customer satisfaction. We aspire to continue growing in the infrastructure sector while delivering exceptional value to our stakeholders and enhancing shareholder prosperity.

OUR MISSION

01

To deliver exceptional residential and commercial properties that exemplify quality and innovation.

02

To ensure timely completion of projects while consistently exceeding customer expectations.

03

Build trust and nurture long-term relationships with our clients through transparency and reliability.

04

To strengthen our position as a market leader in real estate development and infrastructure construction.



THE KRISHIIV STORY

Krishiiv Landmarks Pvt. Ltd is a leading real estate development company headquartered in Pune, renowned for its commitment to innovation, sustainability, and customer satisfaction. With a legacy spanning over a decade, we have established ourselves as a trusted name in the real estate and construction industry.

Our journey began in 2014, rooted in engineering contracting. Over the years, we have delivered iconic projects across Pune and PCMC, including infrastructure developments, residential townships, commercial complexes, educational institutions, and luxurious lifestyle homes. This rich experience has shaped our expertise, enabling us to blend traditional craftsmanship with modern engineering marvels.

Driven by a vision to redefine luxury living, Krishiv Group transitioned into the real estate sector with a larger objective: to craft homes that set new benchmarks in lifestyle and comfort. With 10 years of dedication and expertise, we have embraced cutting-edge engineering to create exceptional spaces that reflect global standards of luxury and sustainability.

In just seven years of real estate operations, we have successfully delivered outstanding projects in Pune and PCMC, building a strong foundation of trust and excellence. As we continue to grow, we are expanding our footprint globally, committed to designing innovative lifestyles and engineering happiness for a better tomorrow. At Krishiiv Landmarks Pvt. Ltd, we are more than just builders. We are creators of homes, lifestyles, and experiences. Empowered by our legacy of expertise and a forward-looking vision, we strive to become the new-age market leader in luxury living.

THE KRISHIIV PHILOSOPHY

To build **as we flow**

To be **fluid and adapt**

To be **humble and patient**

To find **a solution without conflict**

To work in **harmony with the environment**

To be **open-minded to new thoughts, ideas, and realities**

WITH OUR LEGACY AND EXPERTISE
OF OVER 10 YEARS WE ASPIRE TO
CRAFT QUINTESSENTIAL LIFESTYLE
BY INTRODUCING , SETTING NEW
BENCHMARKS, CONSTRUCTING AND
DELIVERING TOP NOTCH REAL
ESTATE EXPERIENCES



ENGINEERING DNA



2014

Under S B Kale. firm engaged in Govt. Contracts Work at Pimpri Chinchwad Muncipal Corporation



2014-2019

Developed Infrastructure, Garden, buildings, various engineering structures area in Pimpri Chinchwad Muncipal Corporation, Pune University, PWD and PMRDA departments. Now today "S B Kale" firm become "S B Kale Projects india pvt ltd"



2019

Introduced in Real Estate Industries with the Project - First Avenue @ Hinjewadi



2019-2023

Successfully delivered first avenue ,Lilavati heights, sai vertex and business square project



2023

Started high rise project of 14 Floor i(70 Flats of 2BHK & 3BHK) Krishiv Vista @ Kiwale, Ravet. Whole Porject has been sold out in 02 days at the time of launching also located Shree Balaji Height.



2024

Incorporated with M/s Krishiv Landmark Pvt. Ltd.



2024-2025

Signed 02 New project @ Hinjewadi and @ Phursungi.

"Building Dreams,
Creating Futures."



An aerial night photograph of a city, likely London, showing the River Thames winding through the center. The city lights are a mix of warm yellow and orange, creating a vibrant, glowing pattern against the dark night sky. The text is overlaid in the bottom left corner.

**STRIVING
FOR SUCCESS
THROUGH VALUE**

THE KRISHIIV VALUES:

01

Integrity

Committed to honesty, transparency, and ethical practices in every aspect of our business.

02

Innovation

Continuously embracing modern technologies and creative designs to deliver exceptional value.

03

Sustainability

Promoting eco-friendly and sustainable construction practices to protect the environment.

04

Customer-Centricity

Placing customer needs at the forefront, providing tailored solutions and unparalleled satisfaction.

05

Excellence

Striving for the highest standards in quality, execution, and service delivery.

06

Collaboration

Fostering strong partnerships with clients, stakeholders, and the community for mutual growth.





**CRAFTING TIMELESS
SPACES , CHERISHED FOR
FOR GENERATIONS**

OUR STRENGTHS

01

The Krishiiv Landmarks Pvt. Ltd is extremely capable to take any task and possesses all the necessary skills of specialization to ensure smooth execution of every project. Our team is our pride.

02

Dedicated and professional senior management with **average 20+ years of industry experience**

03

Inhouse construction capability with **limited subcontracting**

04

Qualified & well-trained workforce team of engineers, technical staff and project managers

05

Efficient project monitoring and cost contro

06

Debt-free holding company

07

Established track record and reputation of timely and quality project execution

08

Excellent client relations receiving repeated jobs from clients

10+ YEAR OF LEGACY

“10 YEAR OF QUALITY EXECUTION IN
INFRASTRUCTURE AND REAL ESTATE”

04+

COMPLETED PROJECTS

250+

HAPPY FAMILIES

4,00,000 SQFT

AREA DELIVERED

(REAL ESTATE & CONTRACTING)

6,00,000 SQFT

AREA UNDER CONSTRUCTION AND UPCOMING



CRAFTING TIMELESS SPACES, CHERISHED FOR GENERATIONS.

PRESENT EVERYWHERE WITH ALL OUR HEART

Krishiiv Landmarks Pvt. Ltd is one of the leading and prominent construction companies in India. It is renowned for completing multiple prestigious residential projects.

Equipped with experience and expertise spanning 5 decades, we have established ourselves as the 'possession specialist' delivering projects on time, with a strict 'zero-compromise' policy when it comes to quality. We remain committed to designing elevated lifestyles with the highest level of craftsmanship and unparalleled service through trust and transparency.

At Krishiiv Landmarks Pvt. Ltd, it is our passion to develop landmarks that match global standards as we are guided by our ethos to create lifestyles and real value for one and all. (so you can live better).



LIVE BETTER

OUR PROMISE TO THE WORLD

For us 'Live Better' is more than just a catchphrase . It rather serves as a compass towards handcrafting uber -luxury real estate of world -class quality . With our expertise, passion and years of experience, we endeavour to create the very best real estate experiences for our customers and residents . We remain firmly committed to building living spaces with thoughtful holistic facilities and state -of -the -art amenities where a resident can live, work and play better . We are on a journey to offer not only the best possible quality of life but also improve upon the way of life itself so you can live better



KRISHIIV
GROUP

MAKING EACH
ACHIEVMENT A
MASTERPIECE.

COMPLETED PROJECTS



G+4 RESIDENTIAL & COMMERCIAL PROJECT
FIRST AVENUE

● **Location:** Hinjewadi, Pune



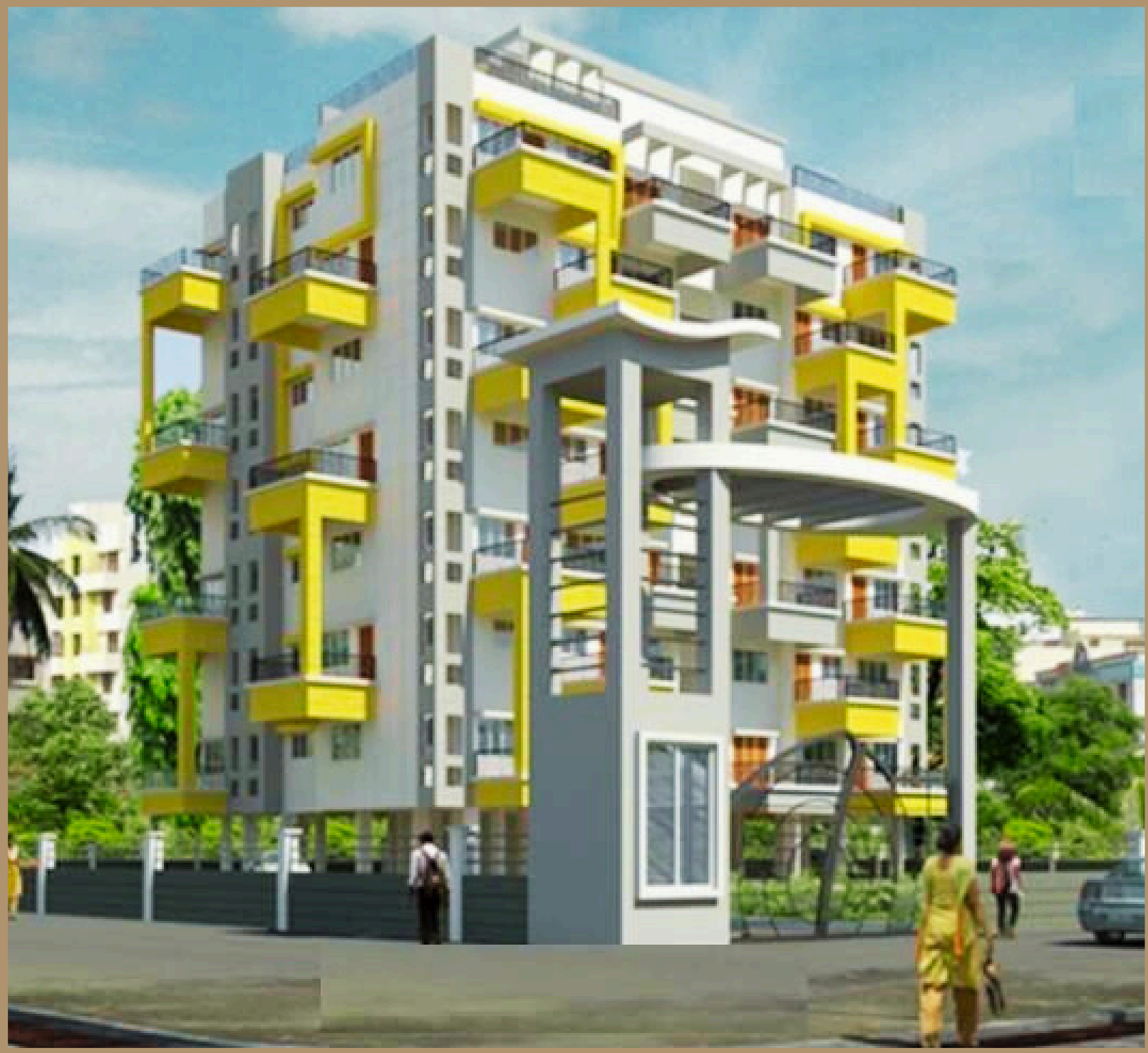
G+5 RESIDENTIAL PROJECT
LEELAVATI HEIGHTS

● **Location:** INDRAYANINAGAR BHOSARI PRADHIKARAN, Pune



COMMERCIAL PROJECT
BUSINESS SQUARE

● **Location:** Chakan, Pune

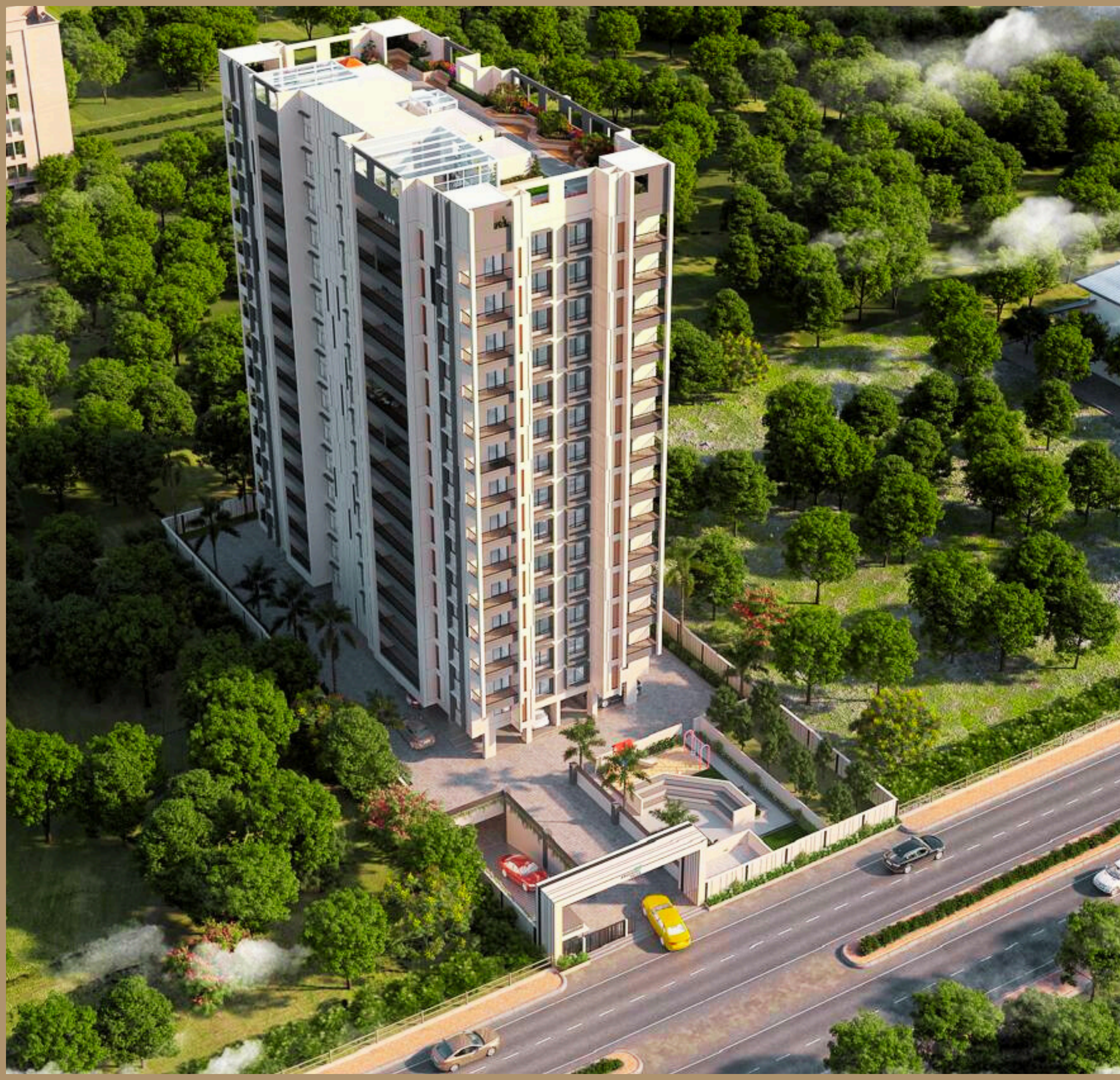


G+7 RESIDENTIAL PROJECT
SAI VERTEX

● **Location:** , MOSHI PRADHIKARAN Pune



ONGOING PROJECTS



RESIDENTIAL-

KRISHIV VISTA

2 & 3 BHK MODERN HOMES
Ravet-Kiwale

KRISHIV VISTA

- Basement +ground +14 storys Ravet-kiwale 2bhk & 3bhk.
- Krishiv vista is luxury, an architectural master piece of spacious balcony and extra and iconic symbol.

BREATHTAKING ARCHITECTURE, CONQUERING VISTA



SKY FACING AMENITIES.





SHREE
BALAJI HEIGHTS

2 BHK LUXURIOUS FLATS
AT CHIKHLI

RESIDENTIAL-



SHREE BALAJI HEIGHTS

- G+7 floor residential luxurious 2 BHK flats
- Exclusive 2 BHK apartment for better living



UPCOMING PROJECT



BUSINESS PARK -

KRISHIIV BUSINESS PARK

● **Location:** Hinjewadi

1 acre land parcel with exclusively IT based
commercial stand alone building with amenities
14th floor tower



RESIDENTIAL PROJECT- KRISHIIV PRIDE

- **Location:** Phurusungi
- Its krishiiv groups upcoming big project with 180 inventory
- With swimming pool, club house and ultra modern amenities



CREATING MARVELS WITH THE ART OF ENGINEERING

With a legacy of more than 10 years of building infrastructure across India S B KALE (S B KALE PROJECTS INDIA PVT LTD) is a leading construction company that continues to alter the structural landscape through several prestigious projects in the residential, commercial, industrial, institutional and industrial spaces . Our commitment to excellence in quality was personified through various engineering structures across PCMC like Elevated bus station development between two bridges of JRD TATA bridge at Kasarwadi, National flag at rakshakchouk, campus development ,International boys and Girls hostel at University of Pune,

. As a natural extension, we forayed into the real estate sector and are currently developing luxury and premium real estate projects with an approximate area of over 600000 sq.ft. in various parts of Pune. We remain steadfast in our commitment to exceeding client expectations by achieving global benchmarks for transparency, reliability and integrity . By leveraging our strengths of quality, timely deliveries, and superior customer service along with a highly qualified and experienced management team, we aspire to consolidate our position in the market



NATIONAL FLAG AT AUNDH MILITARY STATION RAKSHAK CHOWK

CLIENT : Pimpri chinchwad municipal corporation

SCOPE OF WORK : Construction & installation of 30.5 m height and developing garden around flag

LOCATION : Rakshakcouk Aundh ravet BRT road



BIODIVERSITY PARK DEVELOPMENT AT TALWADI

CLIENT OF WORK : Pimpri chinchwad municipal corporation

LOCATION : Talwade, PCMC

AREA : 11 Hectares to 60 acr.



ELEVATED BUS STATION BETWEEN JRD TATA FLYOVER KASARWADI

CLIENT : Pimpri chinchwad municipal corporation

SCOPE OF WORK : 15m height pier between two bridges of JRD TATA along with curvature

LOCATION : JRD TATA FLYOVER KASARWADI



INTERNATIONAL BOYS HOSTEL

- **CLIENT OF WORK :** Pune University
- **LOCATION :** International hostel campus
- **AREA:** G+6 floor boys hostel with 180 students occupancy
- **Description:** Hostel is especially for abroad students learning at Savitribai Phule Pune university with premium facility .
This project is completed within 11 month with fastest timeline a achievement



VIRANGULA KENDRA PIMPRI

- **CLIENT OF WORK :** Pimpri chinchwadmunicipal corporation
- **LOCATION:** Pimpri
- **AREA:** Community hall



PRIDE VILLA

- **CLIENT OF WORK :** Pimpri chinchwadmunicipal corporation
- **LOCATION:** Shiruri
- **AREA:** G+2 residential building



KRIDA VIHAR

- **LOCATION :** Bhosari
- **AREA:** G+1 residential building Sports complex



CAMPUS DEVELOPMENT AT ERAVATI EDUCATIONAL COMPLEX SPPU

- **CLIENT OF WORK :** Pune University
- **LOCATION :** Eravati campus campus
- **AREA:** 25 acre area
- **Description:** Eravati complex includes 8 dept headquarters, area is developed by making concrete road, landscaping , parkingsampheterectc are developed within 9 month.

SBK PIPL ONGOING PROJECT



COMMERCIAL -

INTERNATIONAL GIRL'S HOSTEL

● **Client of work:** Pune University

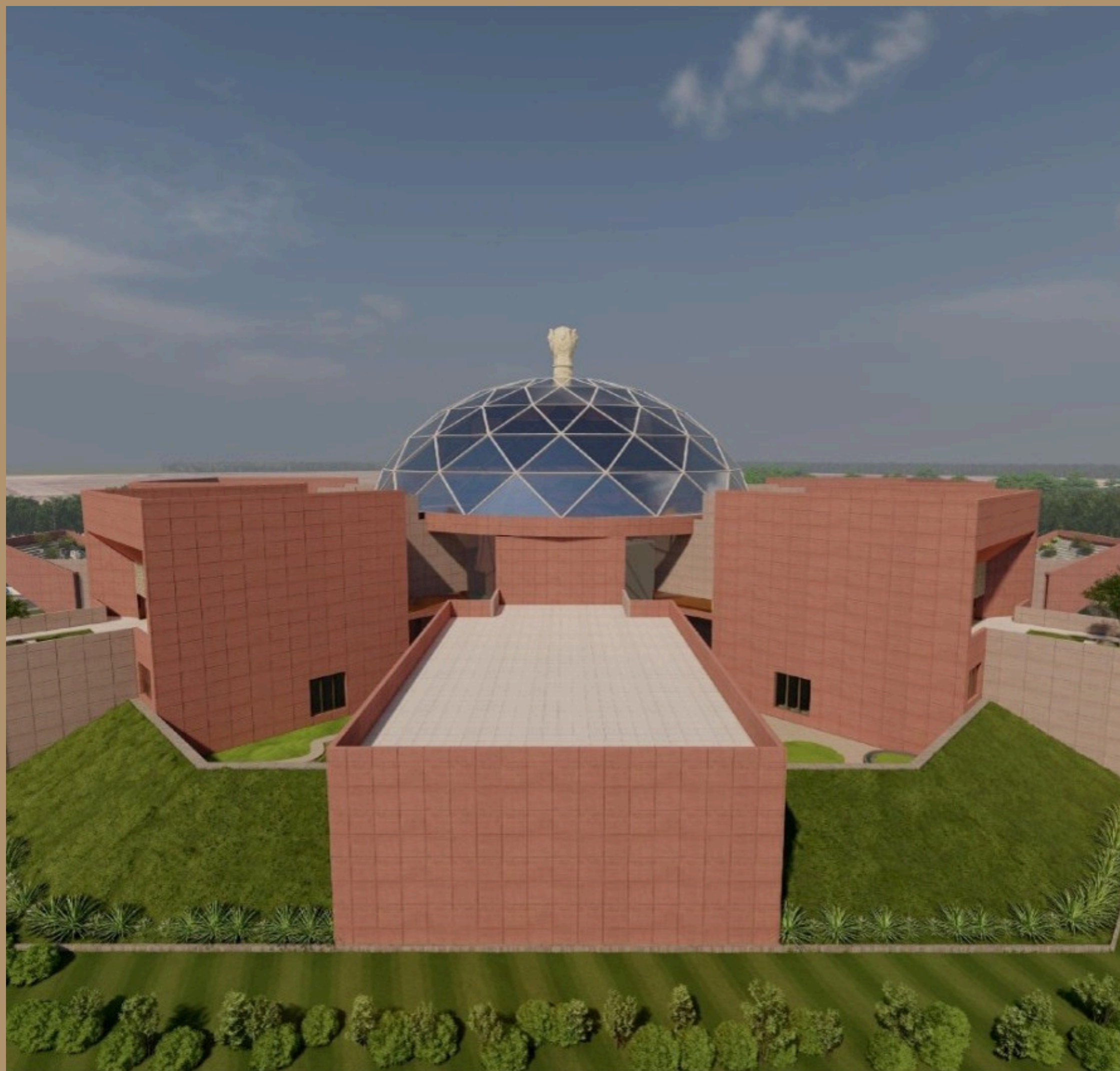
● **Location:** International Hostel campus

Area: 1, 50, 000 sqft Build up area
G+14 story Building

● **Description:** Pune University International department have developed hostel with Ultra modern amenities to students opportunity accompany around 300+ students

SB Kale project has completed this project within 18 months

● **Area:** 1, 50, 000 sqft Build up area G+14 story Building



COMMERCIAL -

SANVIDHAN BHAVAN

- **Client of work :** PCMC
- **Location:** Moshi
B + G + B Story Building
Area: 7 acr.
- **Description:** PCMC Exclusively constructing in Honor of Sanvidhan and spread message to society equality in India. Constructed India's first Sanvidhan Bhavan.
We are proud feeling to be a part of this project
- **Date of Completion - June 2026**



KRISHIIV
— **GROUP**



WWW.KRISHIIVGROUP.COM



+91 94030 23921

